



Head of the Curve®



Stealthbox®

INSTALLATION GUIDE
for the

SBA-CAN-MVX3-DK-MM50

SKU# 99839

2017-Up Can-Am Maverick X3

Dash Kit for MediaMaster® MM50

SBA-CAN-MVX3-DK-MM50 INSTR_SKU# 011518

! IMPORTANT

If you choose to perform the installation yourself, it is absolutely vital that the Stealthbox® be properly mounted to the vehicle according to these instructions. Failure to mount the enclosure properly presents two problems:

- 1) The sub-bass performance will suffer due to the movement of the enclosure caused by the force exerted by the woofer(s).
- 2) A loose enclosure presents a serious safety hazard in the event of a collision or sudden deceleration.

INSTALLATION
DIFFICULTY:

1 OUT OF 5

ESTIMATED TIME:
1 HOUR



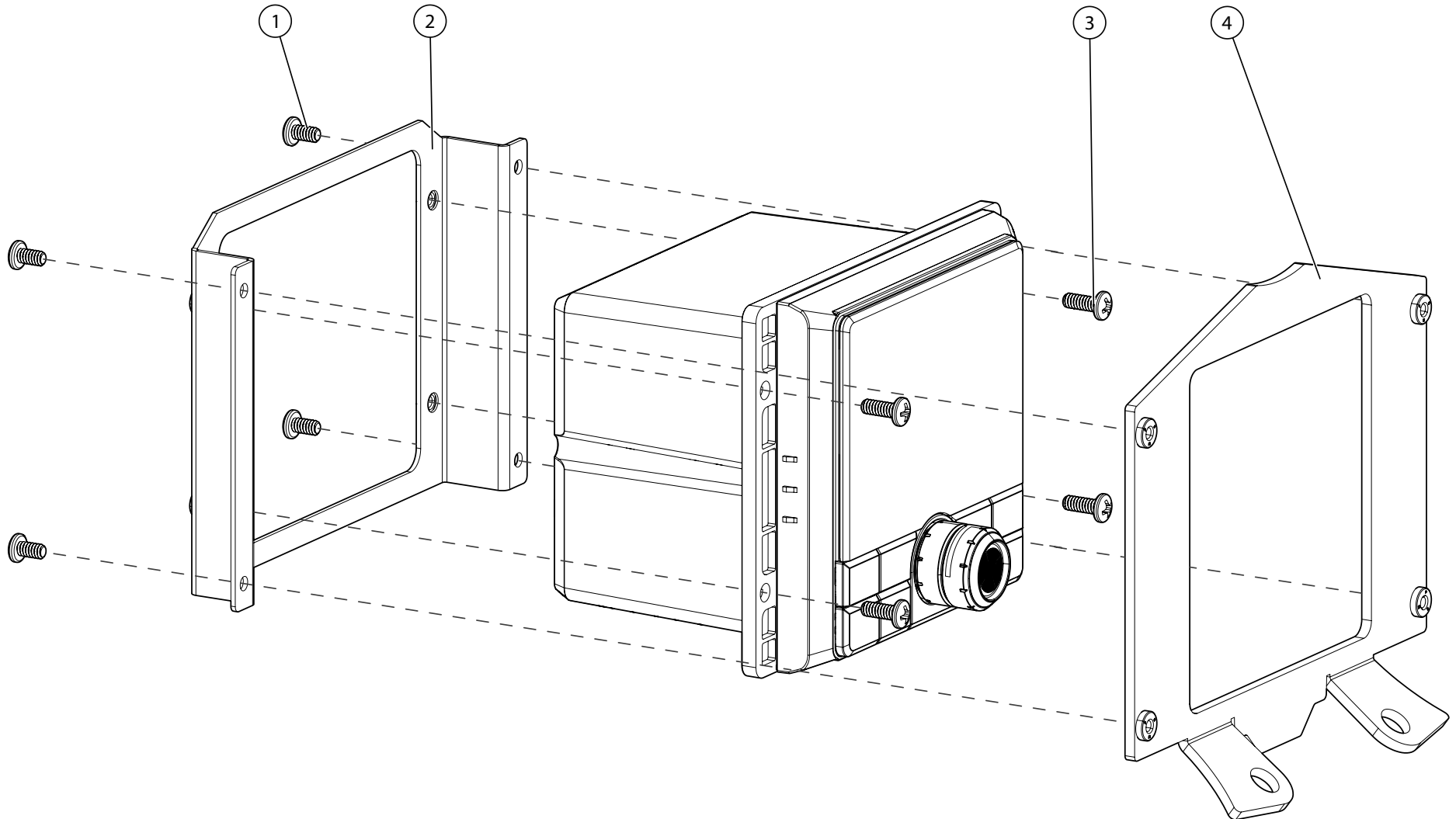
Thank you for choosing a JL Audio Stealthbox® for your automotive sound system. With proper installation, your new vehicle-specific enclosed subwoofer system will deliver years of listening pleasure.

We strongly recommend that you have your new Stealthbox® installed by your authorized JL Audio dealer. The installation professionals employed by your dealer have the necessary tools and experience to disassemble and reassemble your vehicle properly. If you prefer to perform your own installation, please read this installation guide completely before beginning the process.

Continued on Next Page

INCLUDED HARDWARE

BOM ID	Qty	SKU	Description
1	4	154008	#6 - 32 x 1/4" Pan Head Machine Screw
2	1	154003	Dash Kit Back Plate
3	4	154007	#6 - 32 x 5/8" Pan Head Machine Screw
4	1	154002	Dash Kit Trim
-	1	192231	Loctite® Blue Thread-Locking Compound (not shown)





STEP 1

Remove the trim ring from the MM50. It will not be reinstalled.



STEP 2

Pass all wiring and cables of the MM50 through the Dash Kit Back Plate, as shown. With the angled corners oriented upward, move the Dash Kit Back Plate forward to the rear of the MM50 mounting flange.



STEP 3

Align the holes in the Dash Kit Back Plate with the holes on the MM50 mounting flange.

Apply Loctite® Blue Thread-Locking Compound to the end of each of four #6 - 32 x 5/8" Pan Head Machine Screws, and secure the MM50 to the Dash Kit Back Plate from the front, as shown.



STEP 4

Position the Dash Kit Trim over the front of the MM50, aligning its mounting holes with the holes on the Dash Kit Back Plate.

Apply Loctite® Blue Thread-Locking Compound to the end of each of four #6 - 32 x 1/4" Pan Head Machine Screws, and secure the Dash Kit Trim to the Dash Kit Back Plate from the back, as shown.



STEP 5

Remove the two Torx screws at the bottom of the center dash panel.



STEP 6

From behind the dash posts, insert the Dash Kit assembly into the mounting location.

Align the lower holes in the Dash Kit Trim with the factory holes, and secure using the factory Torx screws.



CONGRATULATIONS!

You have completed the installation for this model! Enjoy your new Stealthbox® Accessory!

JL AUDIO | How we play.®    

(954) 443-1100

www.jlaudio.com

All specifications are subject to change without notice. "JL Audio" and "How we play" are registered trademarks of JL Audio, Inc. "Ahead of the Curve" and its respective logo are trademarks of JL Audio, Inc.

Printed in USA • ©2019 JL Audio, Inc. • For more detailed information please visit us online at www.jlaudio.com.

JLA-SKU# 011518 • ver. 12.12.2019 • 10369 NORTH COMMERCE PARKWAY • MIRAMAR, FLORIDA • 33025 • USA



011518